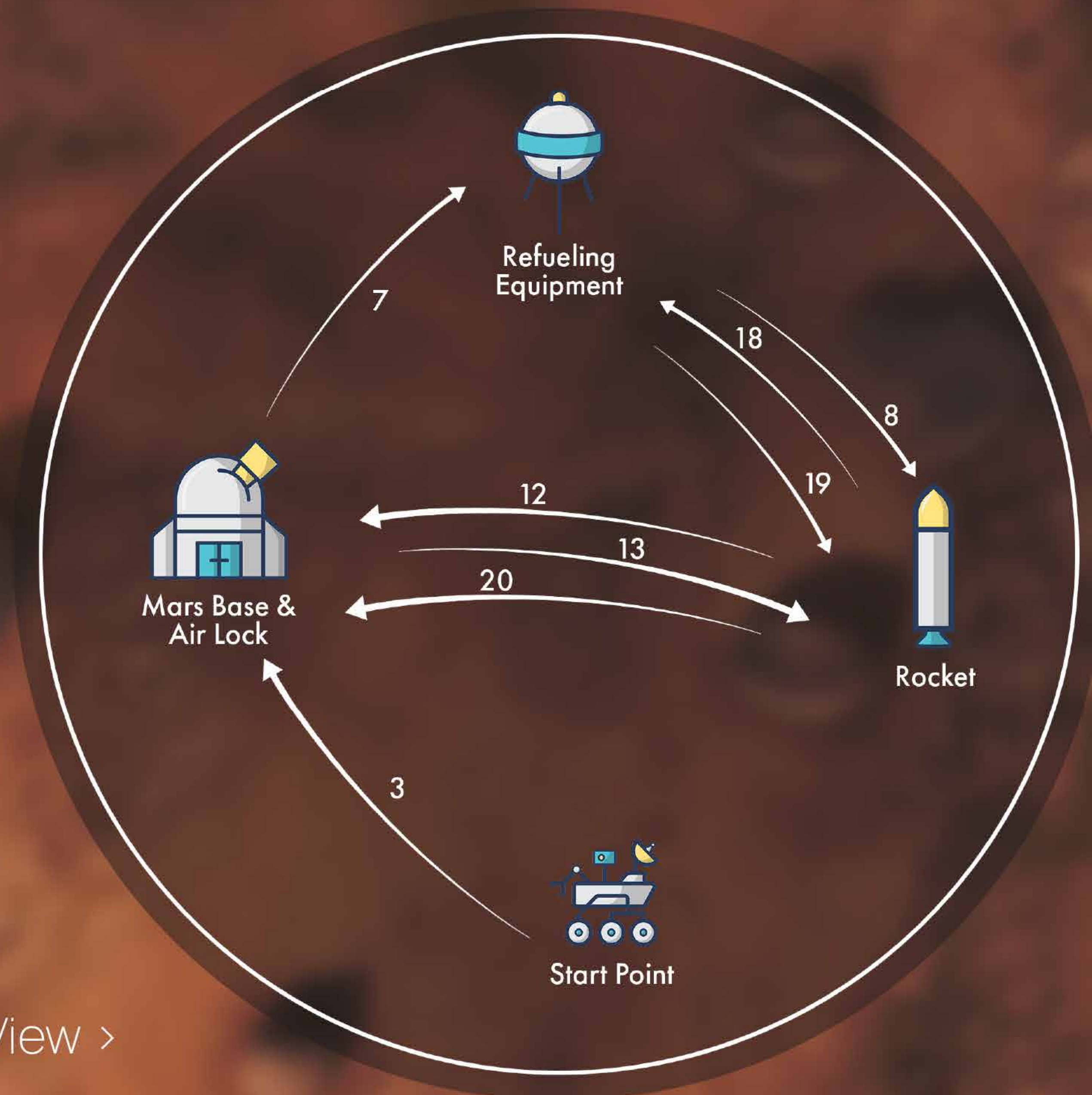


# Mission 1

Sample and Launch Mission  
Mars Field - 80 min



Missions Plan View >

# The Mission Steps

1. The mission starts from the designated area.
2. The area is surveyed and the soil samples are collected.

During the sample collection process,

- a. panoramic photographs of the area
- b. photographs of the sampling site
- c. the stratigraphic photographs of the area
- d. sensor measurements should be taken.

### **3. The rover navigates to the Mars Base.**

4. After reaching the Mars Base, the rover enters the base through the airlock.
5. The rover is prepared by astronauts for the next part of the mission. Experiments are started on the samples submitted by the juries.
6. The rover is in the airlock.
- 7. The rover is moved near the refueling equipment.**
- 8. The refueling equipment is transported to the**

### **rocket.**

9. The pipe of the refueling equipment is attached to the rocket.
10. The valve on the refueling equipment is opened.
11. Panel A is manipulated by reading the value of the indicator.
- 12. The Sample box and the USB stick are taken from the Mars Base by the rover.**
- 13. The rover returns to the rocket.**
14. The sample box is loaded into the rocket.
15. The USB stick is plugged in and out.
16. The valve is closed.
17. The pipe is removed and placed on the trailer.
- 18. The refueling equipment is moved back.**
- 19. The rocket countdown is started by manipulating panel B.**
- 20. The rover goes to the airlock.**

\*Bold texts indicates missions plan view in the previous page.

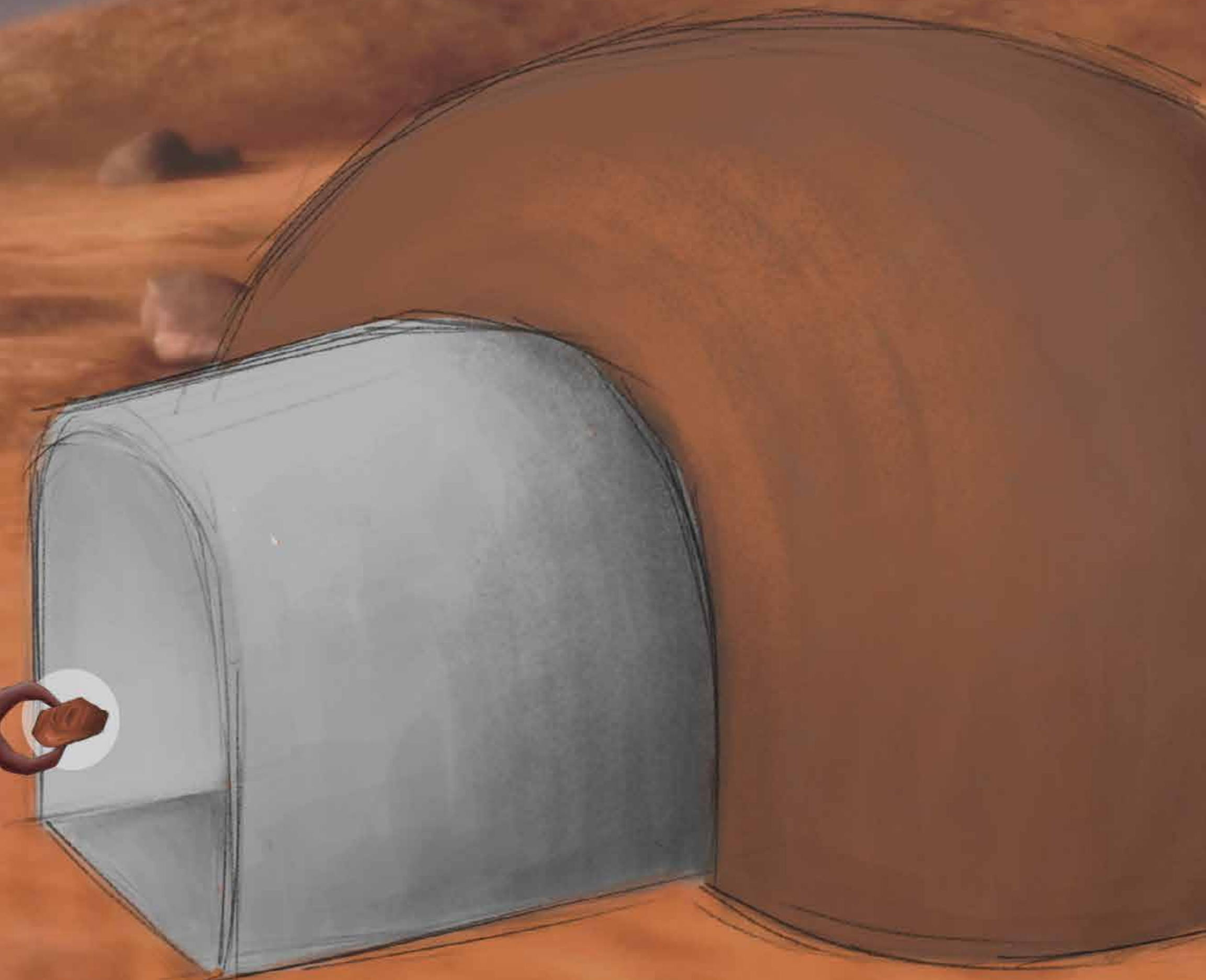
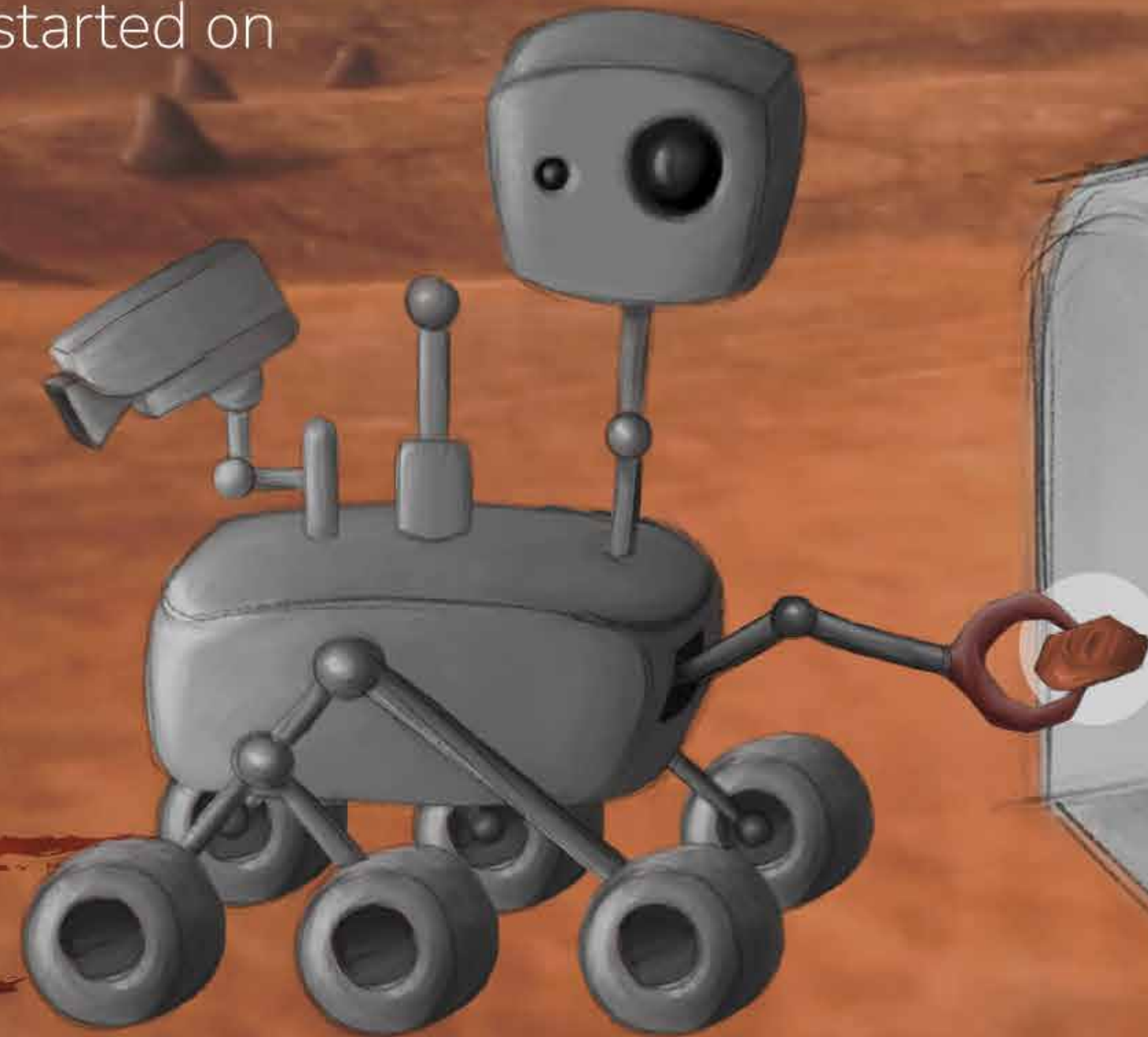
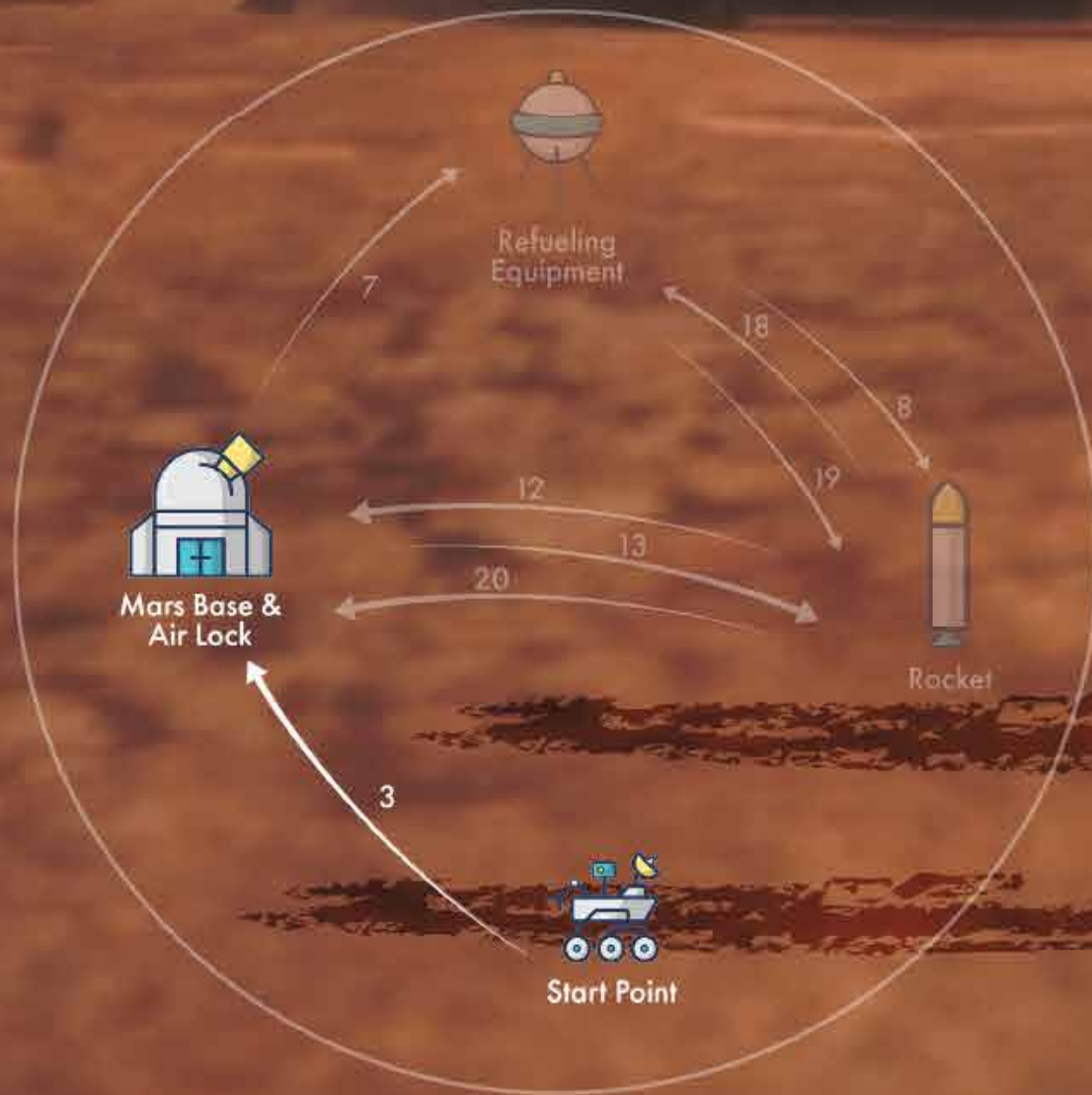
1. The mission starts from the designated area.
2. The area is surveyed and the soil samples are collected.

During the sample collection process,

- a. panoramic photographs of the area
- b. photographs of the sampling site
- c. the stratigraphic photographs of the area
- d. sensor measurements should be taken.

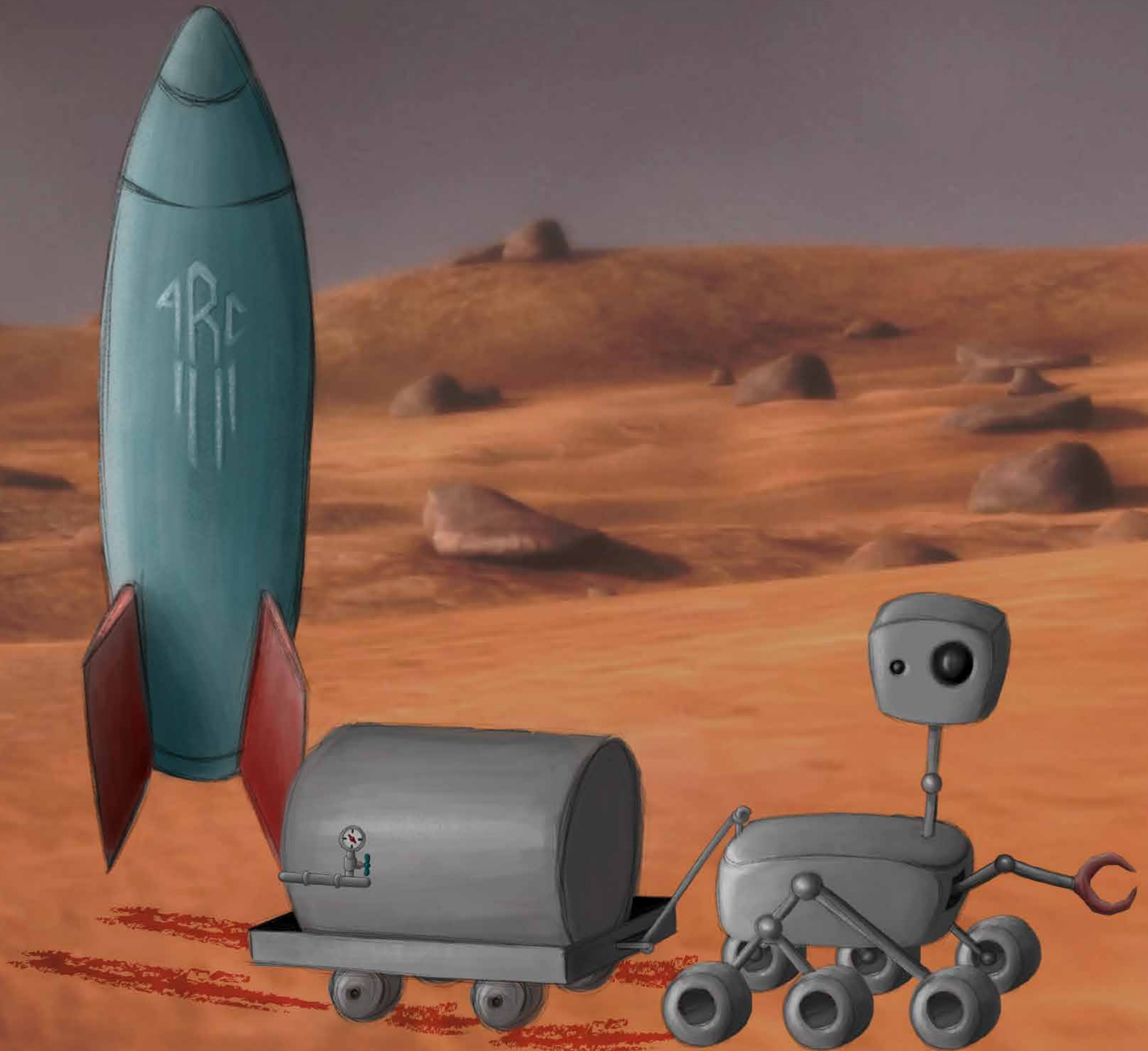
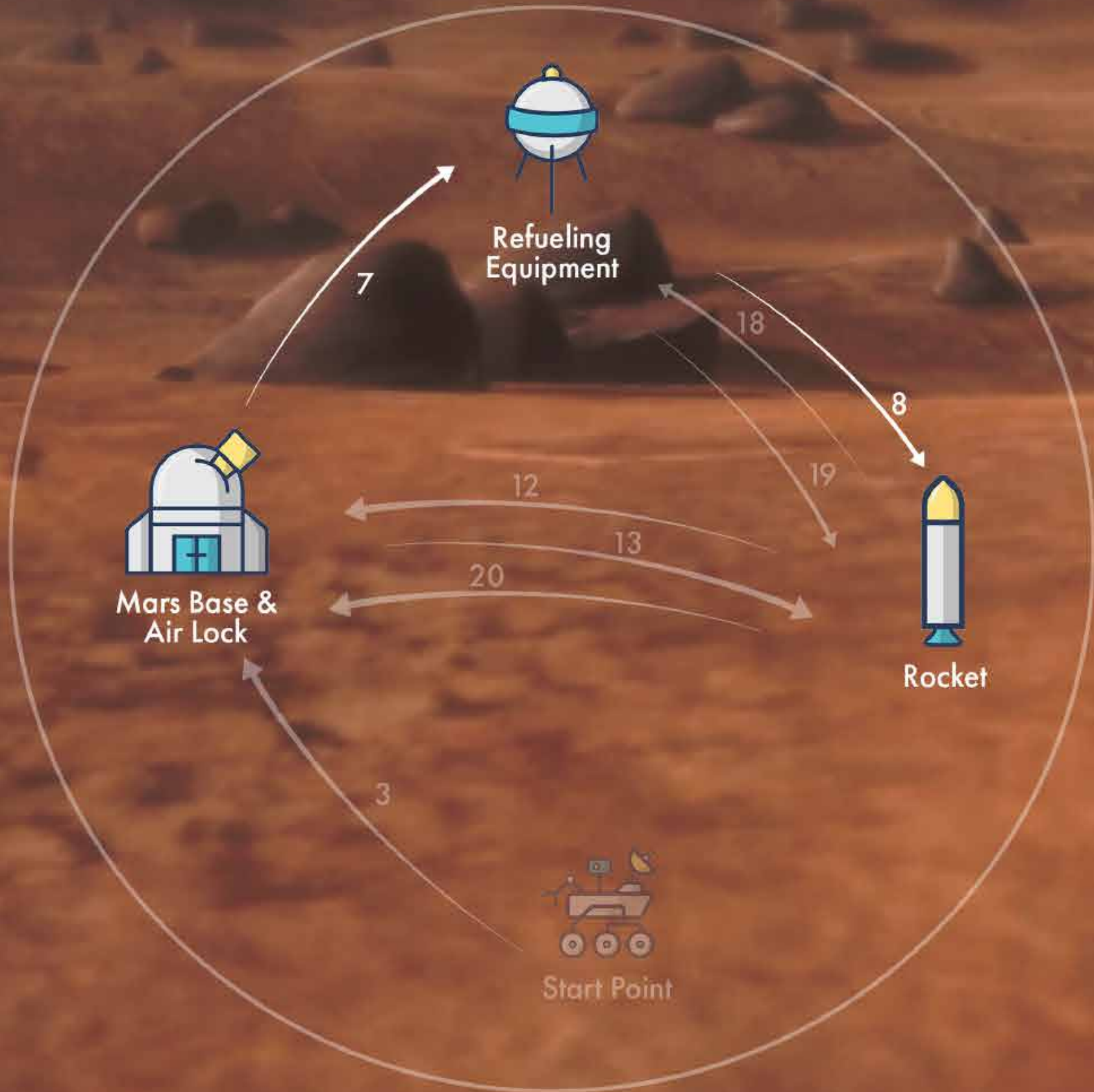
### 3. The rover navigates to the Mars Base.

4. After reaching the Mars Base, the rover enters the base through the airlock.
5. The rover is prepared by astronauts for the next part of the mission. Experiments are started on the samples submitted by the juries.
6. The rover is in the airlock.

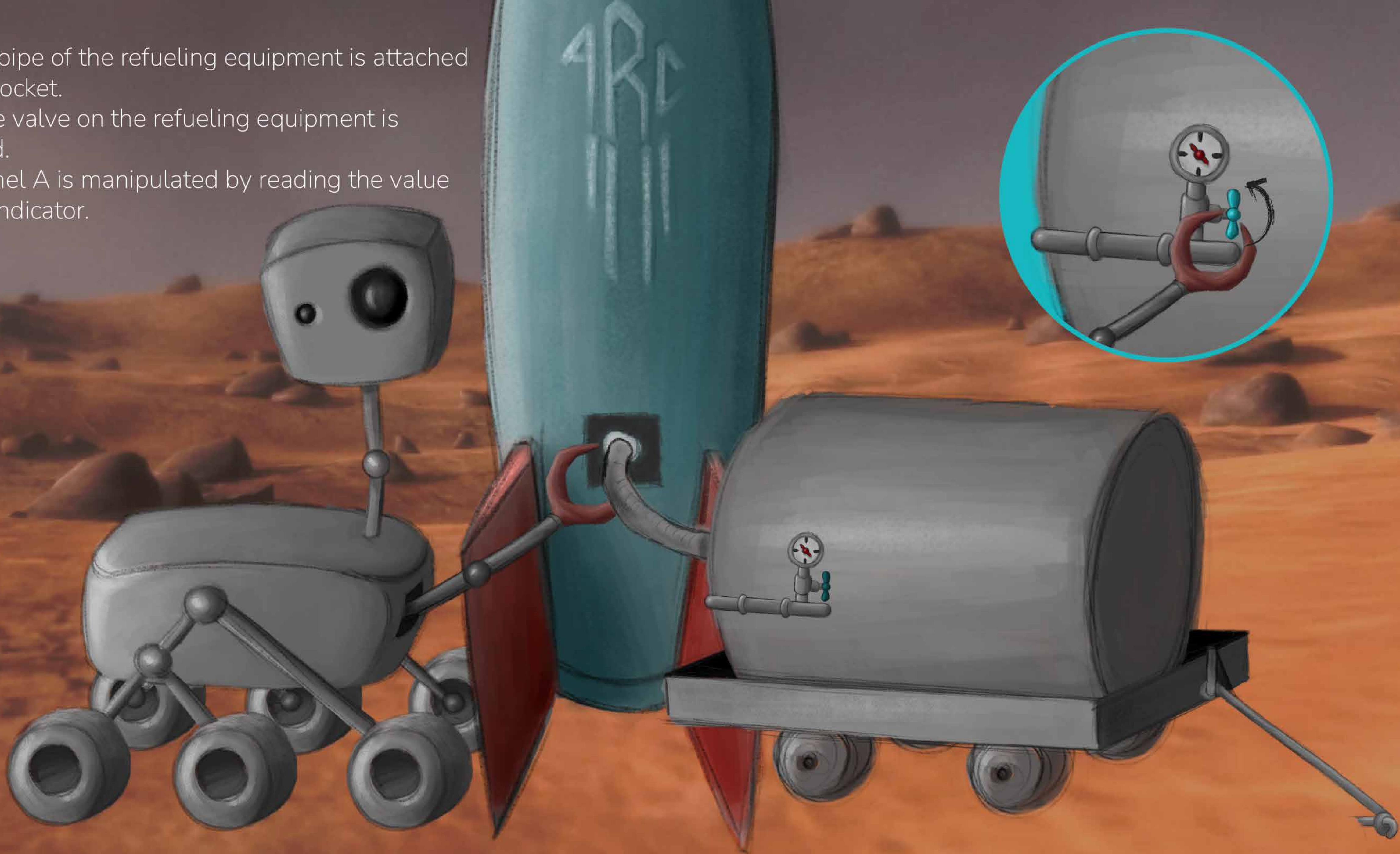


7. The rover is moved near the refueling equipment.

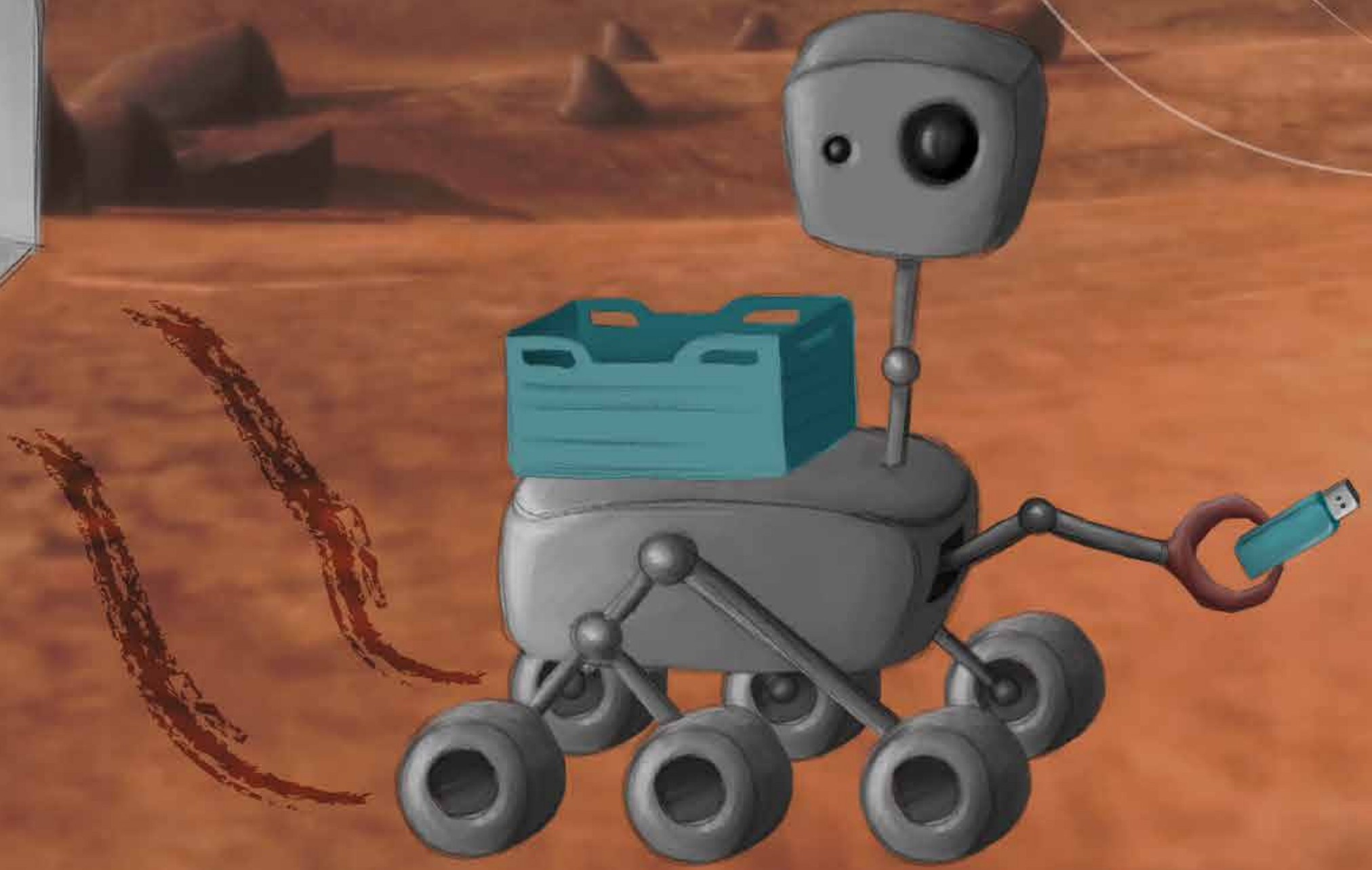
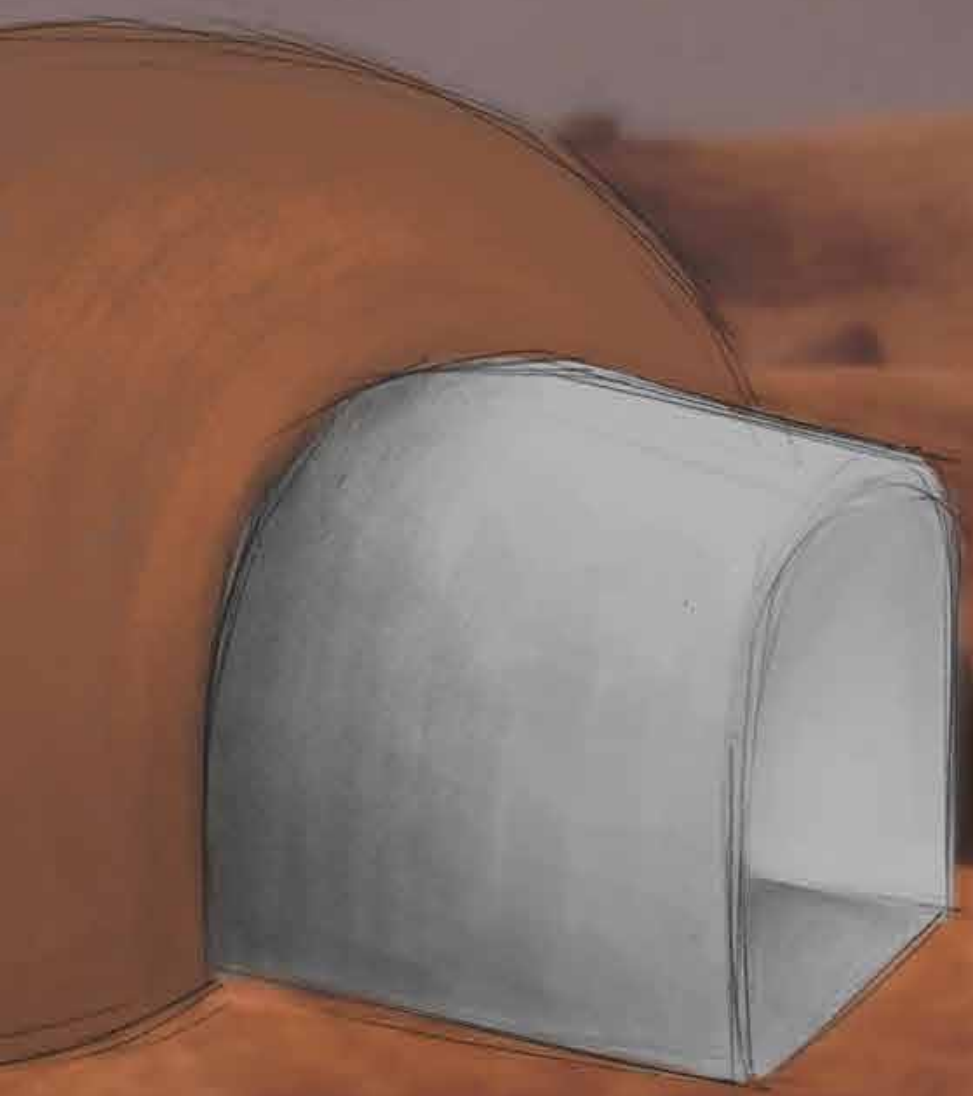
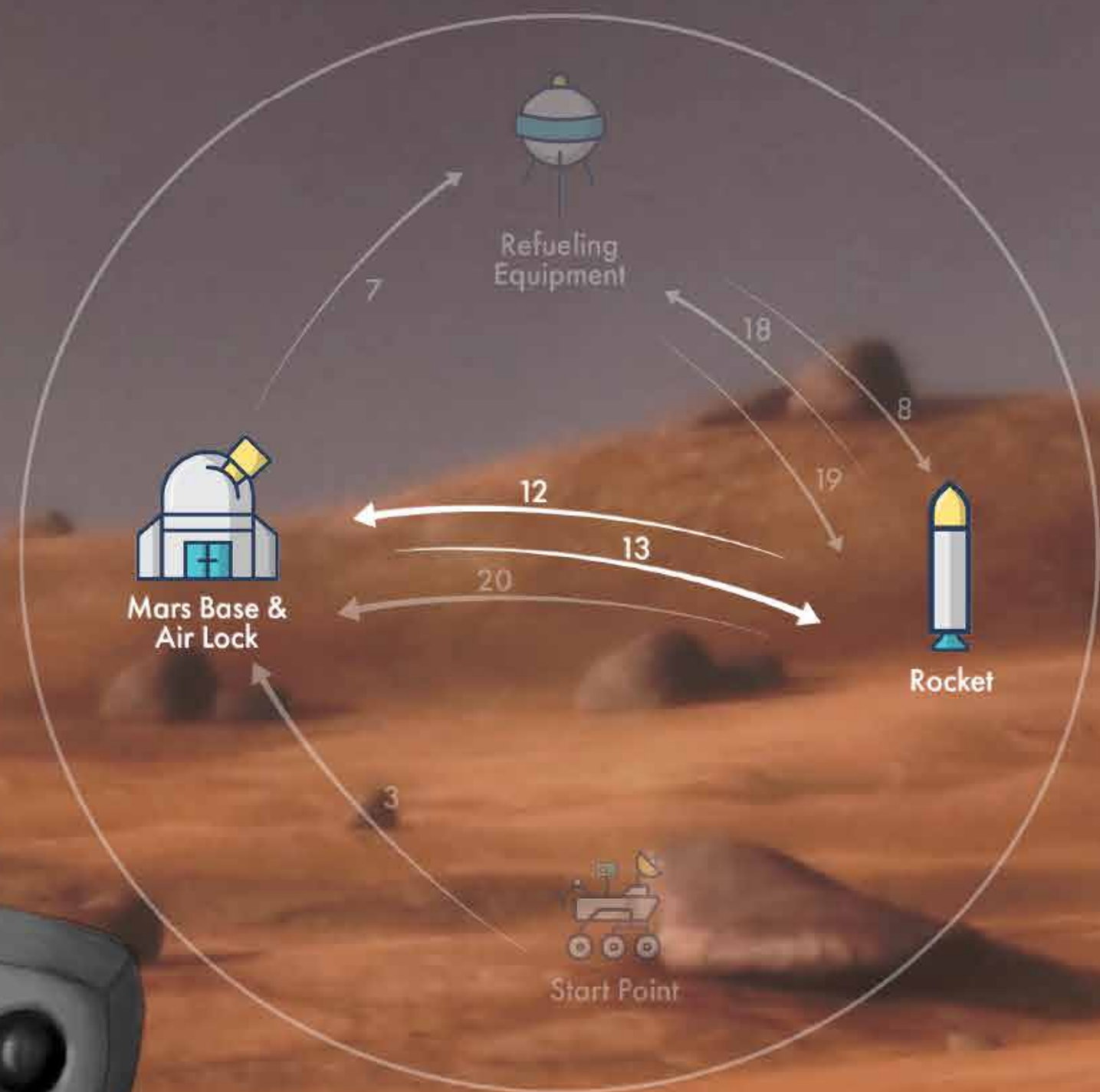
8. The refueling equipment is transported to the rocket.



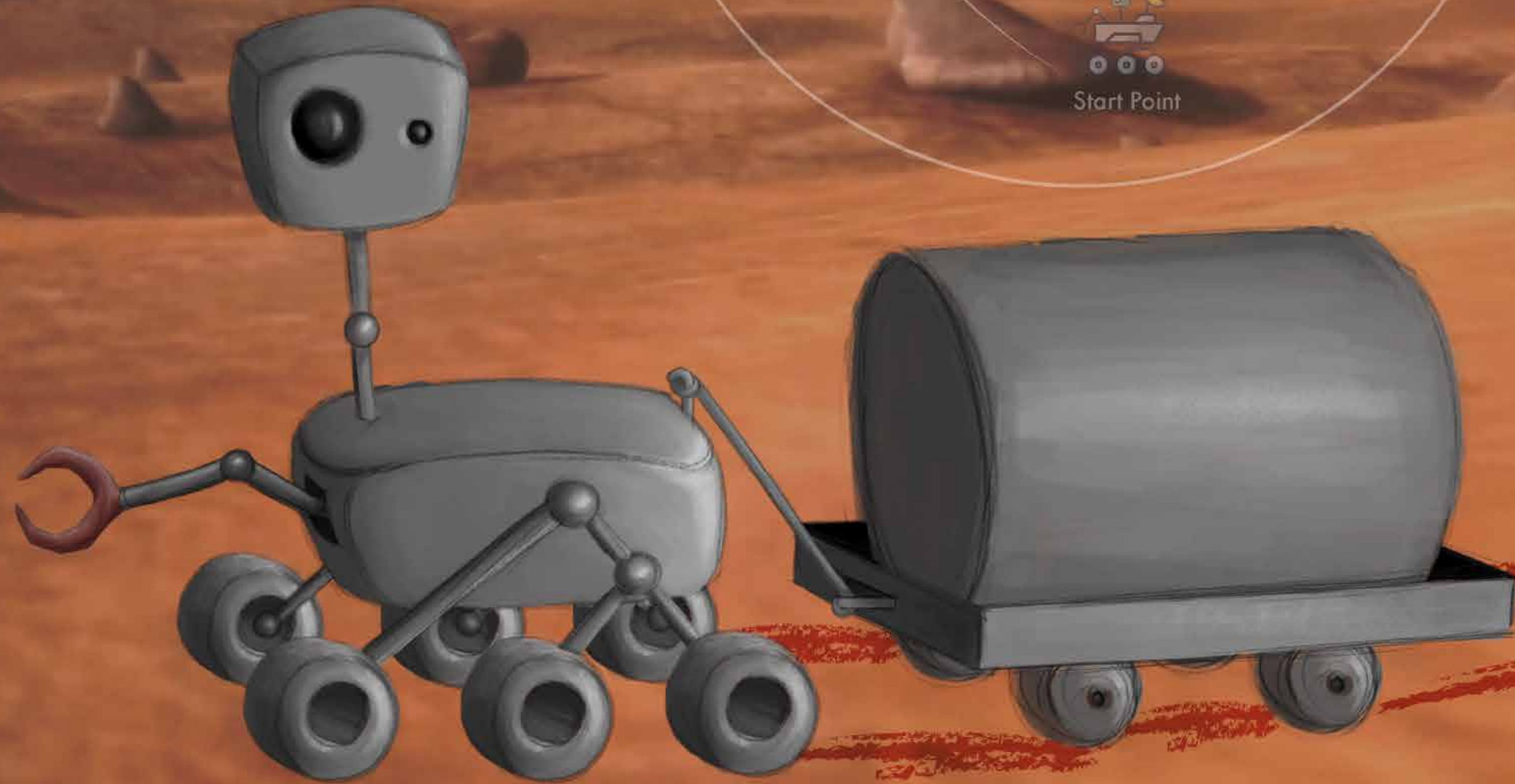
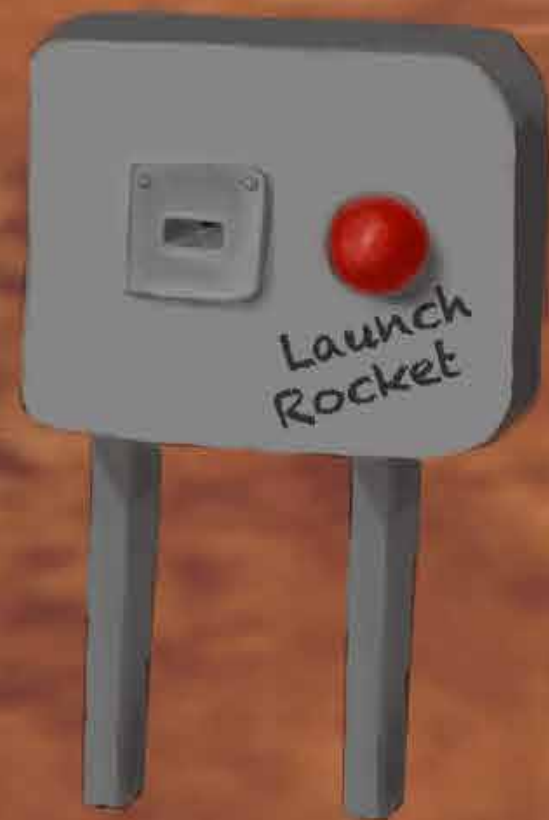
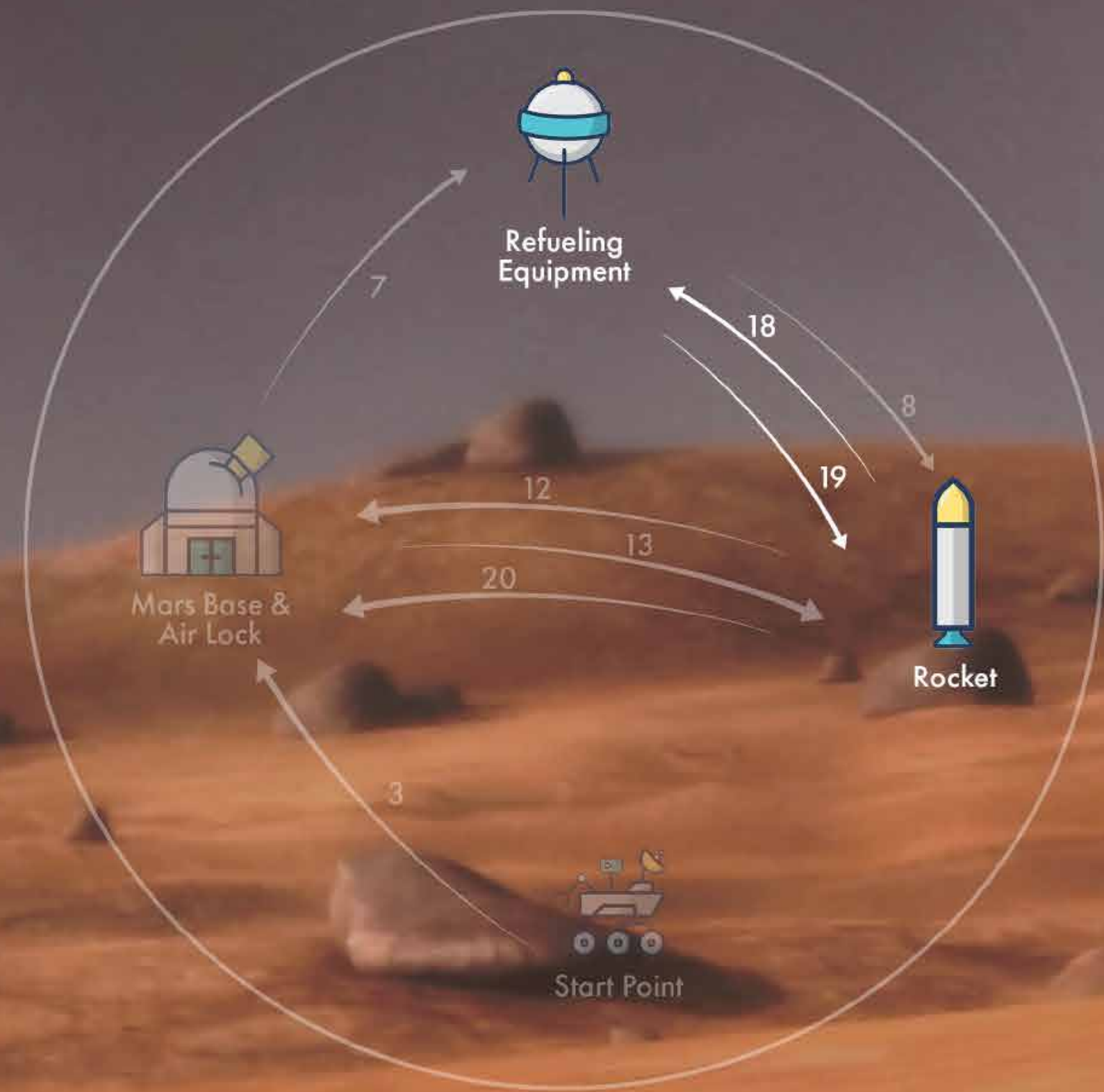
9. The pipe of the refueling equipment is attached to the rocket.
10. The valve on the refueling equipment is opened.
11. Panel A is manipulated by reading the value of the indicator.



- 12. The Sample box and the USB stick are taken from the Mars Base by the rover.
- 13. The rover returns to the rocket.
- 14. The sample box is loaded into the rocket.



- 15. The USB stick is plugged in and out.
- 16. The valve is closed.
- 17. The pipe is removed and placed on the trailer.
- 18. The refueling equipment is moved back.**
- 19. The rocket countdown is started by manipulating panel B.**



## 20. The rover goes to the airlock.

